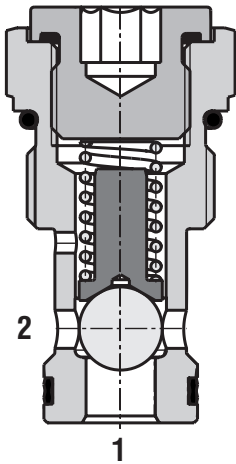


Check Valve, Ball Type

**SC1F-C2**

1-1/16-12 UN • Q<sub>max</sub> 150 l/min (40 GPM) • p<sub>max</sub> 350 bar (5100 PSI)

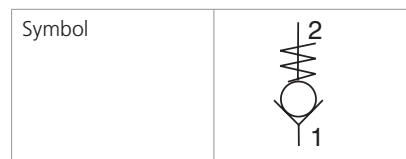


**Technical Features**

- › Hardened precision parts
- › Sharp-edged steel seats for dirt-tolerant performance
- › Leak-free closing, suitable for fast cycling with long life
- › High flow capacity
- › Optional bias spring ranges for back-pressure control
- › In the standard version, the valve is zinc-coated for 520 h protection acc. to ISO 9227

**Functional Description**

A hydraulic check valve in the form of a screw-in cartridge for use as a blocking or load-holding device. The cartridge has a ball check which is closed by spring until sufficient pressure is applied at port 1 to open flow to port 2.



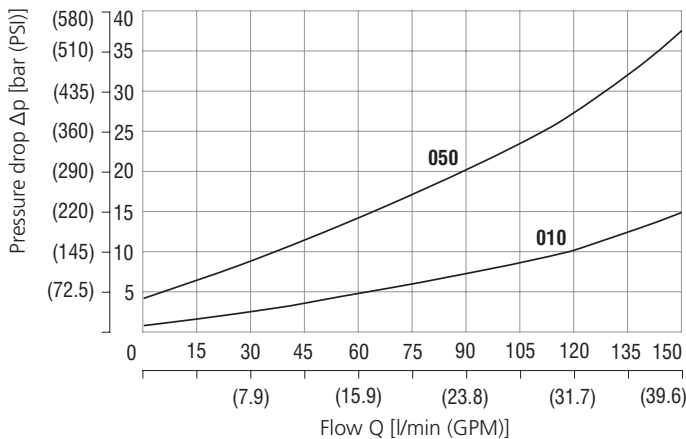
**Technical Data**

Valve size / Cartridge cavity		1-1/16-12 UN / C2 (C-12-2)	
Max. flow	l/min (GPM)	150 (39.6)	
Max. operating pressure	bar (PSI)	350 (5080)	
Cracking pressure	bar (PSI)	1 (14.5)	5 (72.5)
Fluid temperature range (NBR)	°C (°F)	-30 .... +100 (-22 ... +212)	
Fluid temperature range (FPM)	°C (°F)	-20 .... +120 (-4 ... +248)	
Weight	kg (lbs)	0.182 (0.40)	

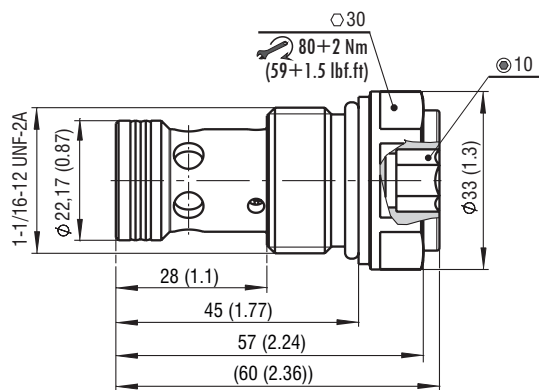
	Datasheet	Type
General information	GI_0060	Products and operating conditions
Valve bodies   In-line mounted	SB_0018	SB-C2*
Cavity details / Form tools	SMT_0019	SMT-C2*
Spare parts	SP_8010	

**Characteristics** measured at v = 32 mm<sup>2</sup>/s (156 SUS)

**Pressure drop related to flow rate**



**Dimensions** in millimeters (inches)



**Ordering Code**

