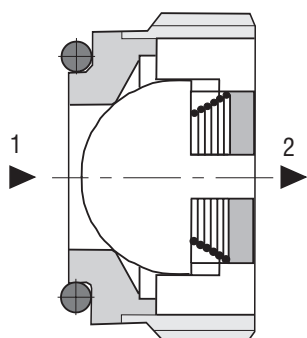


## Check Valve, Ball Type

### VJO1-10/S

Size 10 / M20x1.5 •  $Q_{max}$  80 l/min (21 GPM) •  $p_{max}$  350 bar (5100 PSI)



#### Technical Features

- › Hardened precision parts
- › Sharp-edged steel seats for dirt-tolerant performance
- › Leak-free closing, suitable for fast cycling with long life
- › Compact design for limited installation space availability
- › High flow capacity
- › In the standard version, the valve is without surface coating

#### Functional Description

A hydraulic check valve in the form of a screw-in cartridge-style for use as a blocking or load-holding device. The cartridge has a ball check which is closed by spring until sufficient pressure is applied at port 1 to open flow to port 2.

Symbol	
--------	--

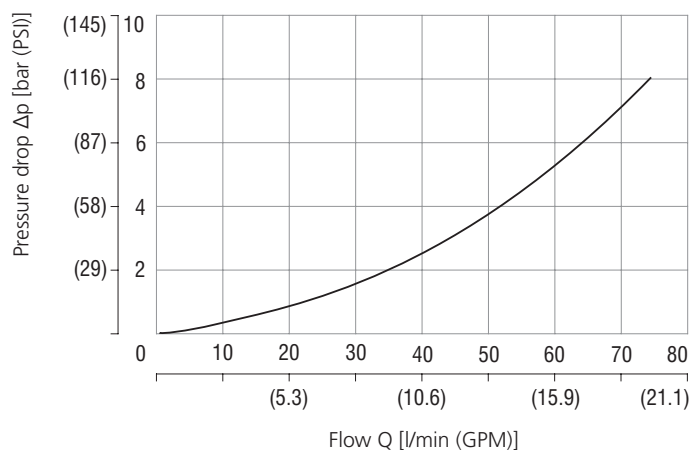
#### Technical Data

Valve size		10 / M20x1.5
Max. flow	l/min (GPM)	80 (21.1)
Max. operating pressure	bar (PSI)	350 (5076)
Cracking pressure	bar (PSI)	0.5 (7.25)
Fluid temperature range (NBR)	°C (°F)	-30 .... +100 (-22 ... +212)
Fluid temperature range (FPM)	°C (°F)	-20 .... +120 (-4 ... +248)
Mass	kg (lbs)	0.017 (0.038)

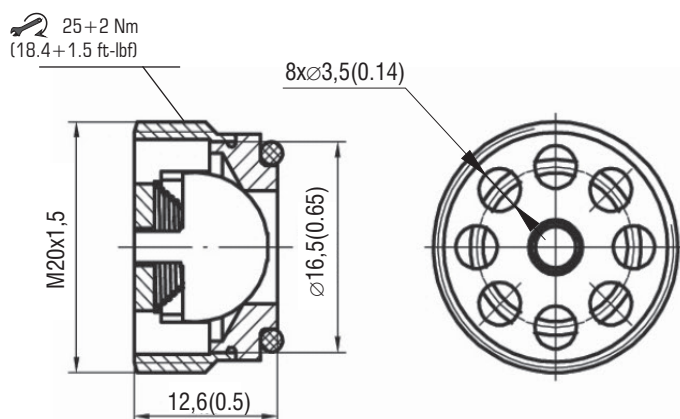
	Datasheet	Type
General information	GI_0060	Products and operating conditions
Spare parts	SP_8010	

#### Characteristics measured at $v = 32 \text{ mm}^2/\text{s}$ (156 SUS)

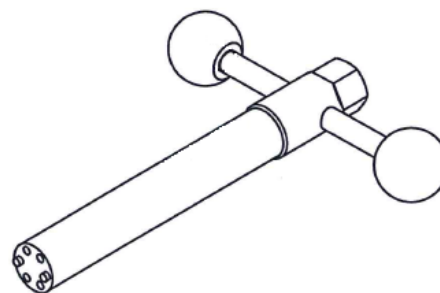
##### Pressure drop related to flow rate



## Dimensions in millimeters (inches)

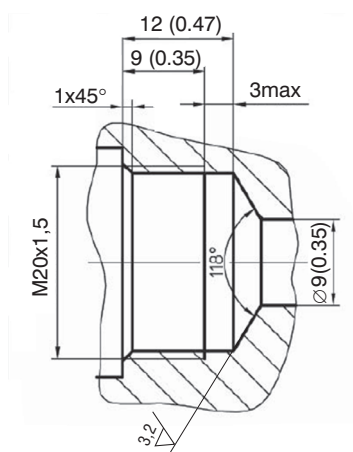


Tool for screwing the valve VJO1-10 into cavity



Please see Spare Parts datasheet (8010) for SAP number.

## Cavity in millimeters (inches)



## Ordering Code

VJO1-10 / S			
Check valve, ball type			
Valve size			
Screw-in			
Thread M20x1.5	M		
		No designation V	Seals NBR FPM (Viton)
		005	Cracking pressure 0.5 bar (7.30 PSI)